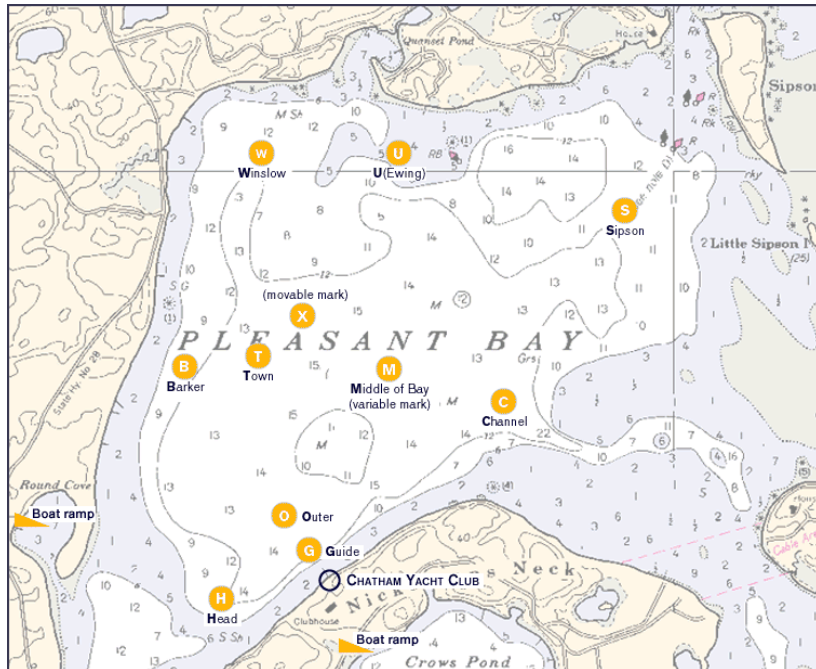




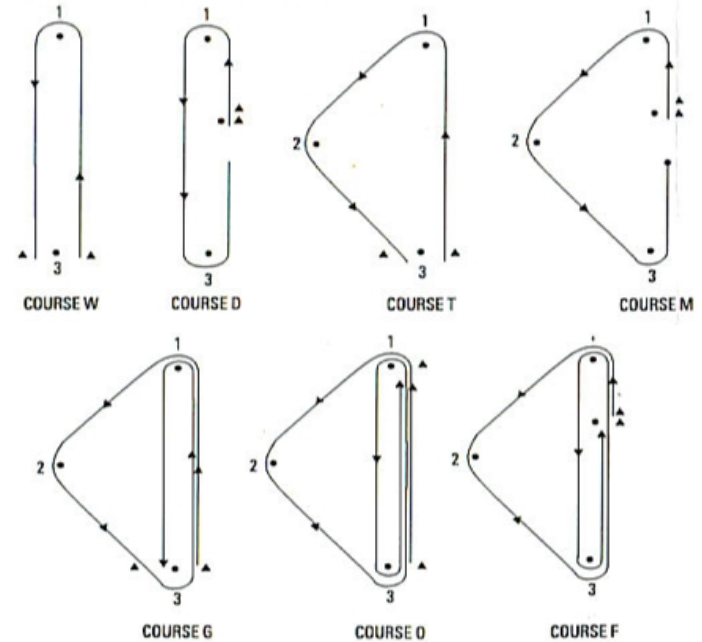
**CHATHAM YACHT CLUB**  
**RACE COURSE SYSTEMS AND RACE SIGNALS**

**FIXED MARK RACE COURSE SYSTEM**



Mark Symbol	Mark Name
B	Barker
C	Channel
G	Guide or "Inner"
H	Head of the Bay
M	Middle of the Bay
O	"Outer"
S	Sipson
T	Town
U	Ewing
W	Winslow

**DROP MARK RACE COURSE SYSTEM**



Course Symbol	Course Description
W	Windward, Leeward
D	Windward, Leeward, with start and finish in middle of leg
T	Triangle
M	Triangle with start and finish in middle of leg
G	Gold Cup – Triangle followed by Windward, Leeward
O	Olympic – Triangle followed by Windward, Leeward
F	Modified Olympic – "O" with start and finish in middle of leg

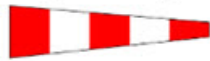


CHATHAM YACHT CLUB  
RACE COURSE SYSTEMS AND RACE SIGNALS

RACE SIGNALS

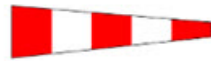
The meanings of visual and sound signals are stated below. An arrow pointing up or down (↑↓) means that a visual signal is displayed or removed. A dot (•) means a sound; five short dashes (-----) mean repetitive sounds; a long dash (—) means a long sound. When a visual signal is displayed over a class flag, the signal applies only to that class.

Postponement Signals



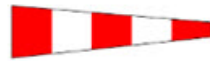
↑•• ↓•

**AP** Races not started are *postponed*. The warning signal will be made 1 minute after removal unless at that time the race is *postponed* again or *abandoned*.



↑••

**AP over H** Races not started are *postponed*. Further signals ashore.



↑••

**AP over A** Races not started are *postponed*. No more racing today.



**Pennant 1** ↑•• ↓•



**Pennant 2** ↑•• ↓•



**Pennant 3** ↑•• ↓•



**Pennant 4** ↑•• ↓•



**Pennant 5** ↑•• ↓•



**Pennant 6** ↑•• ↓•

**AP over a numeral pennant 1-6** *Postponement* of 1-6 hours from the scheduled starting time.

Abandonment Signals



↑•••• ↓•

**N** All races that have started are *abandoned*. Return to the starting area. The warning signal will be made 1 minute after removal unless at that time the race is *abandoned* again or *postponed*.



↑••••

**N over H** All races are *abandoned*. Further signals ashore.



↑••••

**N over A** All races are *abandoned*. No more racing today.

Preparatory Signals



↑• ↓—

**P** Preparatory signal.



↑• ↓—

**I** Rule 30.1 is in effect.



↑• ↓—

**Z** Rule 30.2 is in effect.



↑• ↓—

**Black flag.** Rule 30.3 is in effect.

Recall Signals



↑•

**X** Individual recall.



↑•• ↓•

**First Substitute** General recall. The warning signal will be made 1 minute after removal.

Shortened Course



↑••

**S** The course has been shortened. Rule 32.2 is in effect.

Changing the Next Leg



-----  
**C** The position of the next *mark* has been changed:



to starboard;



to port;



to decrease the length of the leg;



to increase the length of the leg.

Other Signals



↑•

**L** Ashore: A notice to competitors has been posted. Afloat: Come within hail or follow this boat.



-----

**M** The object displaying this signal replaces a missing *mark*.



↑•

**Y** Wear a personal flotation device.



(no sound)

**Blue flag** or shape. This race committee boat is in position at the finishing line.